

BIG DOG ***STARTER***



HD-0300C



METRO AUTO INDUSTRIAL, INC.



Toll Free: 800-263-8761

info@metroautoinc.com

INDEX

DE HOUSING PARTS

51-822106C	6
51-822106P	6
71-82179	6
71-82180	6
71-82507	6
84-82174C	6
84-82175C	6

DRIVE & PARTS

54-82001	7
54-82155	7
54-82199	7
54-82215	7
54-82218HD	7
54-82219	7
54-82022	7
54-82723	7
76-82103	8
76-82104	8
76-82107	8
76-82109	8
76-82110	8
76-82111	8
76-82112	8

SOLENOID & PARTS

53-8273	9
53-8273C	9
66-82102	9
66-82103	9
66-82106	9
66-82110	9
66-82122	10
66-82152	9
66-82203B	9
66-82203C	9
69-82120	10
71-82141	10
72-82104	10
72-82109	10
76-82182	10
76-82508H	10
7966-82002	10
84-82110	11
84-82111	11
84-82118	11
84-82118C	11

INDEX

FIELD CASE & PARTS

6-2004	6
6-6084	6
57-8211C	12
57-82104C	12
58-82201	12
59-82201	12
61-82202	13
61-82202N	13
66-82204	12
71-82103H	12
71-82105	12
71-82115	12
76-82170	13
84-82517C	13

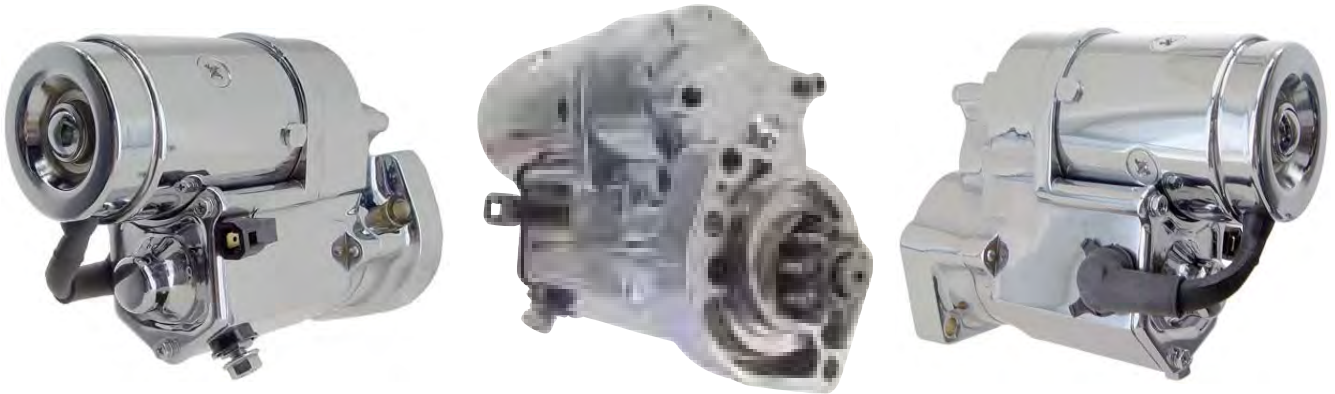
BRUSH HOLDER & PARTS

69-82103H	14
69-82117	14
68-82036-1	14

Exploded View

Current empty

HD-0300C



- Unit Oil Sealed
- Chrome
- All parts available

Fits K9 model of Big Dog motorcycle line up
2004 Early
2005 - Later

DE HOUSING & PARTS



**51-822106C
DE Housing**

For: Front Housing
Dim:
Note: Chrome.
 DE inside & outside has Oil Seal groove.

Photo
 Coming Soon

**51-822106P
DE Housing**

For: Front Housing
Dim:
Note: Polish.
 DE inside & outside has Oil Seal groove.



**6-2004
Bearing**

For: Armature
Dim: 10mmID x 30mmOD x 9mmT
Note:



**6-6084
Bearing**

For: Armature
Dim: 8mmID x 22mmOD x 7mmT
Note:



**71-82179
O-Ring - Seal**

For: DE inside
OEM: 028901-5320
Dim: 41mm ID, 46mm OD
 2.6mm Thickness
Note:



**71-82180
O-Ring - Seal**

For: DE outside
Dim: 50mm ID, 54.5mm OD
 2.6mm Thickness
Note:



**71-82507
O-Ring - Thru Bolt**

For: for the Thru Bolt seal
Dim: 4.8mm ID x 9.1mm OD
Note: used w/84-82714C & 84-82175C Bolt



**84-82174C
Thru Bolt
DE to Field Case**

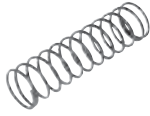
For: DE
Dim: M6 x 1.0 x 50mm L
 26mm Thread Length
Note: O-Ring use 71-82507.
 Chrome



**84-82175C
Thru Bolt
DE to Field Case**

For: DE
Dim: M6 x 1.0 x 80mm L
 26.5mm Thread Length
Note: O-Ring use 71-82507.
 Chrome

DRIVE & PARTS



54-82001 Spring - Shaft

For: Drive Assy
Dim: 16.2mm OD X 61mm L
 1.2mm Dia.

Note:



54-82155 Gear - Idle 26 Teeth

For: Drive Assy
Dim: 22mm ID x 35mm Gear OD
 13.86mm Height

Note:



54-82199 Shaft - Drive CW, 10-SPL

For: Drive Assy
Dim: 102.5mm OAL
 13.5mm OD

Note: used w/54-82218



54-82218HD Sleeve - Drive CW, 10-SPL, Sealed

For: Drive Assy
Dim: 23.7mm OD x 64mm OAL
Note: Heat Treated, w/Oil Seal.
 used w/54-82199



54-82215 Gear - Armature 14 Teeth

For: Drive Assy
Dim: 9.44mm ID x 21mm
 Gear OD 14mm L

Note:



54-82219 Pinion Gear - Drive 9T, CW, 18-SPL

For: Drive Assy
Dim: 35.4mm Gear OD
 23.8mm L,
 13mm Gear Length

Note:



54-82022 Clutch - Drive 40 Teeth

For: Drive Assy
Dim: 53.8mm Clutch Gear OD
 28.5mm Thickness
Note: with or without the Bearing.
 with Sealed.



54-82723 Drive Assy 9T, CW

For: Drive Assy
Dim: 53.8mm Clutch Gear OD
 102.2mm OAL
Note: - w/Bearings
 - Sealed

DRIVE & PARTS



76-82103
Plastic Case

For:
Dim: 21mm OD x 13.2mm L
Note: used w/76-82104 Roller.



76-82109
Retainer Ring - Drive

For: Drive Assy
Dim: 11.5mm IDx14.7mm OD
1.6mm Dia
Note:



76-82112
Gear Plate

For: Drive Assy
Dim:
Note:



76-82104
Roller - Cage

For:
Dim: 6mm OD x 9.5mm L
Note: used w/76-82103 Plastic Cage.



76-82110
Stop Collar - Drive

For: Drive Assy
Dim: 12.9mm ID x 17.8mm OD
Note:



76-82107
Cover - Drive

For: Drive Assy
Dim: 41mm OD x 20.9mm ID
Note:



76-82111
Spring - Pinion Gear

For: Drive Assy
Dim:
Note:

SOLENOID & PARTS



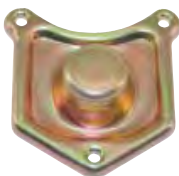
**53-8273
Solenoid Assy**

For: Solenoid Gold Case use
Dim:
Note: Natural color, with Plunger loaded.



**53-8273C
Solenoid Housing**

For: Solenoid Gold Case use
Dim:
Note: Chrome plated.
w/Plunger loaded.



**66-82110
Cover - Solenoid**

For: Solenoid Assy
Dim:
Note: Zinc or yellow zinc color.
Steel material.
Screw use 84-82118.



**66-82102
Gasket - Solenoid Cover**

For: Solenoid Cover
Dim:
Note: Rubber material.



**66-82103
Plunger Assy**

For: Solenoid Assy
Dim: 36.8mm Novable Contact
95.5mm OAL
Note:



**66-82203C
Cover - Solenoid**

For: Solenoid Assy
Dim:
Note: Chrome & Push Button.
Screw use 84-82118C.



**66-82203B
Cover - Solenoid**

For: Solenoid Assy
Dim:
Note: Black Painted & Push But-
ton.
Screw use 84-82118.



**66-82106
Contact - Motor**

For: Solenoid Assy
Dim: 8mm Hole
Note:



**66-82152
Contact - Battery**

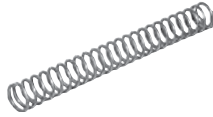
For: Solenoid Assy
Dim: 8mm Hole
Note:

SOLENOID & PARTS



66-82122
Coil - Soleoid

For: Solenoid Assy
Dim:
Note:



69-82120
Spring - Plunger Return

For: Solenoid Assy
Dim: 5.4mm ID x 7.2mm OD
61mm OAL
0.9mm Wire Dia.

Note:



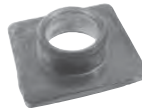
76-82182
Ball - Plunger

For: Solenoid Assy
Dim: 8.7mm Dia.
Note: Steel.



7966-82002
Repair Kit - Solenoid

For: Solenoid Assy
Dim:
Note:



72-82104
Insulator - External

For: Motor & Battery side
Dim: 8mm ID x 6.25 Height
Note:



76-82508H
Switch Terminal

For: Solenoid Assy
Dim:
Note:



72-82109
Insulator - Internal

For: Motor & Battery side
Dim: 11.5mm ID x 19.7mm OD
6mm Height

Note:



71-82141
O-Ring - Battery Terminal

For: Battery Terminal
Dim: 7.6mmIDx11.2mmOD
1.8mmW

Note:

SOLENOID & PARTS



84-82110

Terminal Post - Motor

For: Solenoid Assy

Dim: M8x1.25 x 26mm L

Note: Copper w/Steel plated.



84-82111

Terminal Post - Battery

For: Solenoid Assy

Dim: M8x1.25 x 30.5mm L

Note: Copper.



84-82118C

Screw - Solenoid Cover

For: Solenoid Assy

Dim: M5 x 0.8 x 14mm L

Phillips HEX Head

Note: Crome.



84-82118

Screw - Solenoid Cover

For: Solenoid Assy

Dim: M5 x 0.8 x 14mm L

Phillips HEX Head

Note: Zinc or yellow zinc color.

FIELD CASE & PARTS



66-82204
Insulator

For: Field Coil Assy
Dim: 55mm x 34.1mm
 0.25mm Thickness
Note: Used for protect the Field Coil touched the Field Case.



71-82115
Grommet - F. Case Assy

For: Field Case Assy
Dim: 8mm ID Hole, 81.5mm OAL
Note: Grey color.
 71-82115-BL blue color.



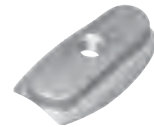
57-82104C
F. Case Housing
Chrome

For: Field Case Assy
Dim: 76mm OD x 114mm OAL
Note: Chrome



71-82103H
O-Ring - Field Case

For: Field Case Assy
Dim: 69.5mm ID x 73.5mm OD
 2mm Thickness
Note:



58-82201
Pole Shoe - F. Case Assy

For: Field Case Assy
Dim: 27mm x 58.6mm
 10.7mm Total Thickness
Note: w/M10x1.0 Thread Hole.
 Screw use 84-82517C.



71-82105
Boot - Motor Lead

For: Field Case Assy
Dim: 5.4mm ID x 7.2mm OD
 61mm OAL
 0.9mm Wire Dia.
Note:



57-8211C
F. Case Assy
Chrome

For: Field Case Assy
Dim: 76mm OD x 114mm OAL
Note: Chrome.
 w/Two Field Brush.



59-82201
F. Coil Assy

For: Field Case Assy
Dim: 60mm Height x 20mm Width
Note:

FIELD CASE & PARTS



61-82202 Armature 19 Spline

For: Field Case Assy
Dim: 10mm Shaft OD, Front Bearing
8mm Shaft OD, Rear Bearing
167mm OAL
Note: Without Bearings.



61-82202N Armature 19 Spline

For: Field Case Assy
Dim: 10mm Shaft OD, Front Bearing
8mm Shaft OD, Rear Bearing
167mm OAL
Note: With both side Bearings.



76-82170C Stud - Thru Bolt

For: Field Case Assy
Dim:
Note: Chrome



84-82517C Screw - Pole Shoe

For: Solenoid Assy
Dim: M10x1.5 x 14mm L
Note: Chrome

BRUSH HOLDER & PARTS



69-82103
Brush Holder Assy
12V, CW

For: 20kw, Gold Case use

Dim:

Note: w/Ground Brush.



69-82117
Spring - Brush Holder
12V, CW

For: 20kw, Gold Case use

Dim: 6.5mm Width

Note: Steel Material



68-82036-1
Brush - Field
12V, CW

For: 20kw, Gold Case use

Dim: 8mmT/25mmW/14.5mmL/
40mmLL wo/Clip

Note:



Metro Auto Industrial, Inc.

Toll Free:(800)263-8761

www.metroautoinc.com

info@metroautoinc.com

Care is taken to ensure the accuracy of photo, descriptions and applications of each items,
but Metro Auto Inc. assumes no responsibility for possible errors.
All the OE number and Lester number are for referece use only.